

## Reversible Flow Manifold for Gases

### Overview :

The TCS-303 Reversible Flow Manifold can be used to change the direction of flow within a given piped circuit. For example when used with a D250 Micropump the TCS-303 can be used to switch the pump's inlet and outlet ports allowing the same pump to be used to fill a container or to empty it.

Suitable for use with the Micropump D Series pump range.

Constructed from precision machined CNC alloy components with stainless steel connectors.

The valves are manufactured using engineering grade polymers (PBT and PPS) and use seals manufactured from Silicon and FKM and are switched using a 12v DC supply.

The push fit connectors are designed for 2.4mm bore flexible tubing.

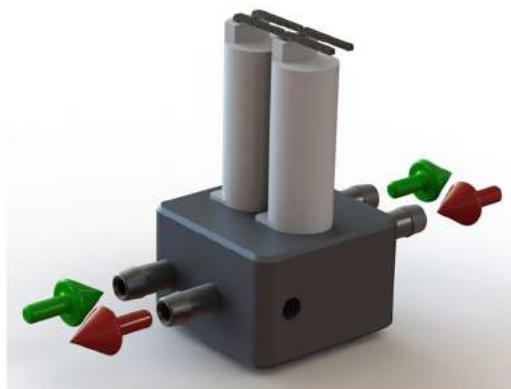
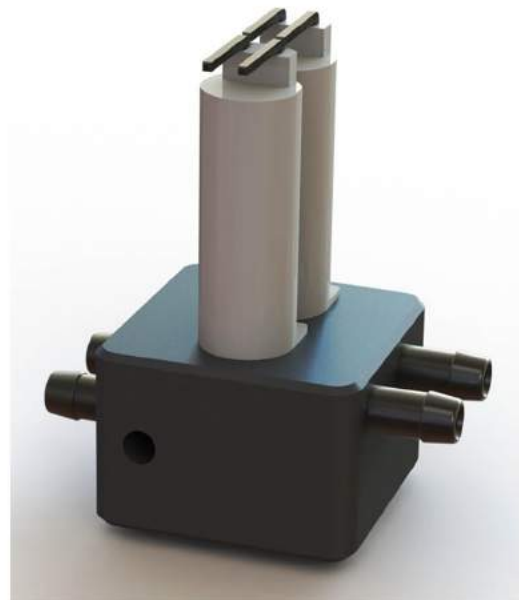
The push fit connectors are designed for 2.4mm bore flexible tubing.

### Typical Applications

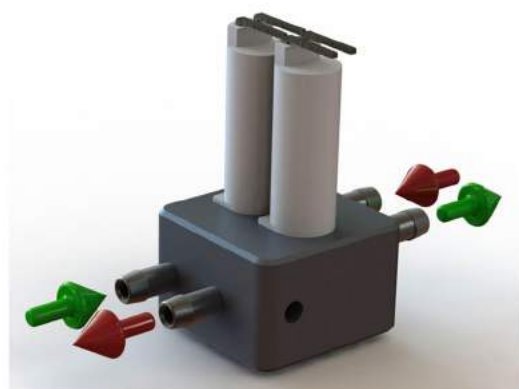
Medical Devices / Analysis systems / Calibration devices

### Features

- CNC aluminium alloy and precision injection moulded construction
- Low power consumption (12v - 0.09A)
- Small size only 20 x 20 x 35 mm
- Weight 22g
- Usable with power supply or batteries
- Wide range of chemical resistance



Pictured - Power off - Standard Flow



Pictured - Power applied - Flow reversed