

Stepper Motor Controllers

Overview :

The EQi-STL controller is a small light weight driver board that can be installed in line with any TCS Stepper motor Micropump. It Delivers controllable consistent flow rates, including a wide RPM range. It runs on standard firmware (2.0) and includes:

- Dispensing Mode
- Dosing Mode
- Analogue Control Mode

The Stepper motor controller allows use of the pumps full potential or a varying amount of performance depending on your requirements. This can be altered by the onboard control pot or via a 0-5v signal voltage. The pump can also be activated or reversed remotely if required.

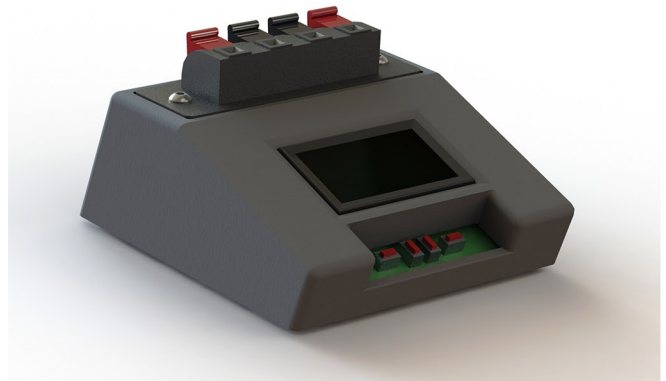
The EQi-STL controller is designed to operate on a supply voltage of between 12-30V. The speed of the pump is 'Governed' above 12v to maintain a constant flow as the back pressure increases. This provides a flatter pressure/flow curve.

Typical Applications

The EQi-STL has been designed and optimised for stepper motors in pump applications. It will work equally well with gear pumps, "R Pumps" or any other type of pump provided that it is driven by a stepper motor.

Features

- Input Voltage 12-30v DC
- Simple spring release terminal connections
- Small size only 42 x 42 x 14 mm (exc case)
- Weight 150g
- Flow can be controlled via an onboard pot. or a 0-5v signal
- Reversible
- Operating Temperature 0 → +80°C
- Usable with power supply or batteries



Pictured EQi-STL Controller
Manufactured to IPC-A-610
under AS9100 QM process