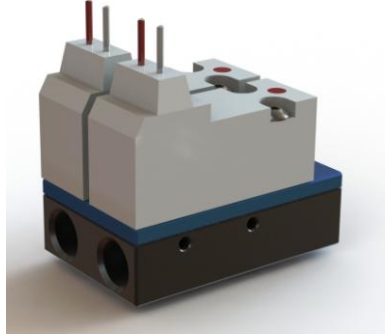


TCS MICROPUMPS: D10K-MAN

(Patents Pending, Quality Assured ISO 9001,
RoHS compliant, IP23 protection rating)

INTRODUCTION

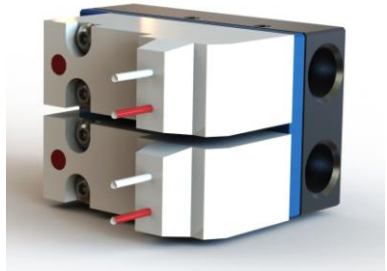
The D10K-MAN Reversible Flow Manifold changes the direction of flow within a given piped circuit. The solid construction and wide temperature tolerance, enable it to perform reliably even in hostile environments. The manifold can be quickly and easily installed into the smallest spaces, in a vast range of laboratory, prototype and production equipment.



ELECTRICAL CONNECTION

The TCS Reversible Flow Manifold requires a 12v DC power source to operate.

Connect both RED wires to the positive terminal of the power supply and both WHITE wires to the negative terminal.

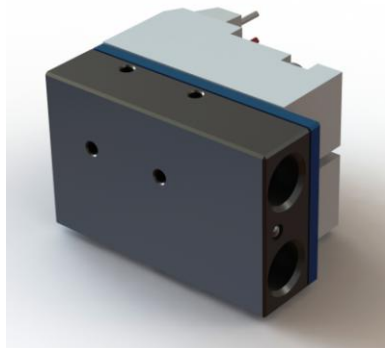


Mounting

2 x M3 mounting holes are provided on both the bottom face and one edge.

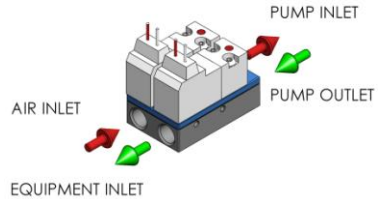
Materials

Housing	Anodised Aluminium
Valve bodies	Engineering Grade Polymers
Seals	Silicon and FKM



TUBING & CONNECTORS

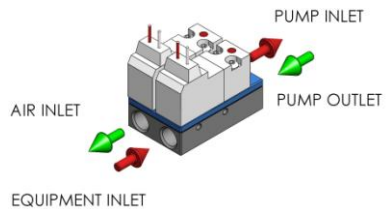
Note tubing connectors are not supplied. Connectors should be sourced to fit the 4 x G1/8th thread holes. The D10K-MAN manifold should be placed in line with your piping circuit as shown.



Operation

With no power supplied to the manifold the flow path is as indicated above. Air is drawn from the atmosphere and pumped into the equipment.

With power applied to the manifold the flow path is reversed. Air is drawn from the equipment and pumped back into the atmosphere.



Notes on Operation

DO NOT IMMERSE YOUR MANIFOLD
Do not operate above 1bar (14.5psi) or against a closed outlet as permanent damage can occur.

